



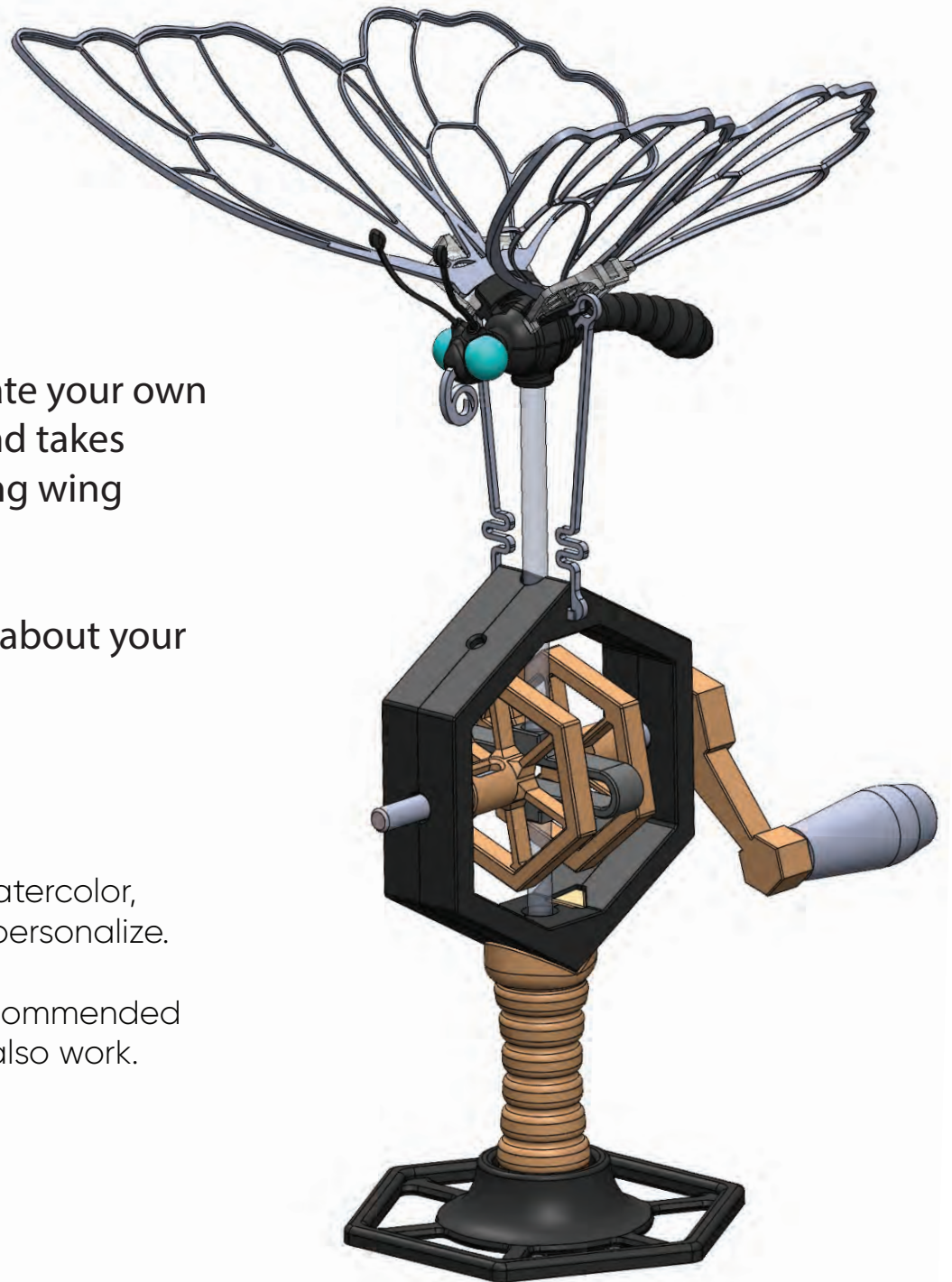
Butterfly Conflaption

Follow along with this manual to create your own kinetic sculpture. This kit is 36 pieces and takes 30-60 minutes to complete, not including wing coloration time.

Ask questions, post pictures, and tell us about your experience at Curiokits.com

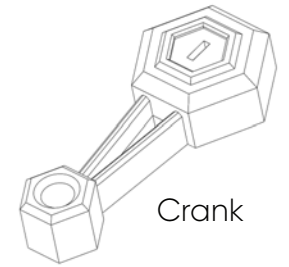
Color the wing inserts as you see fit. Use watercolor, markers, crayons, pencils, pens, or acrylic to personalize.

This kit requires the use of glue. Hot glue is recommended but gel superglue or UV curing epoxy can also work.



1

Assemble the Crank

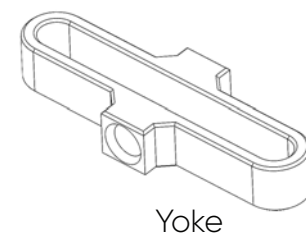
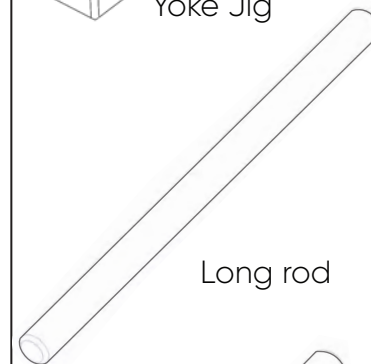
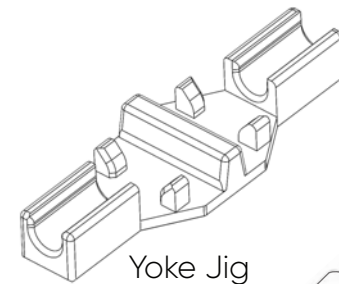
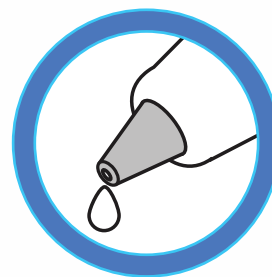
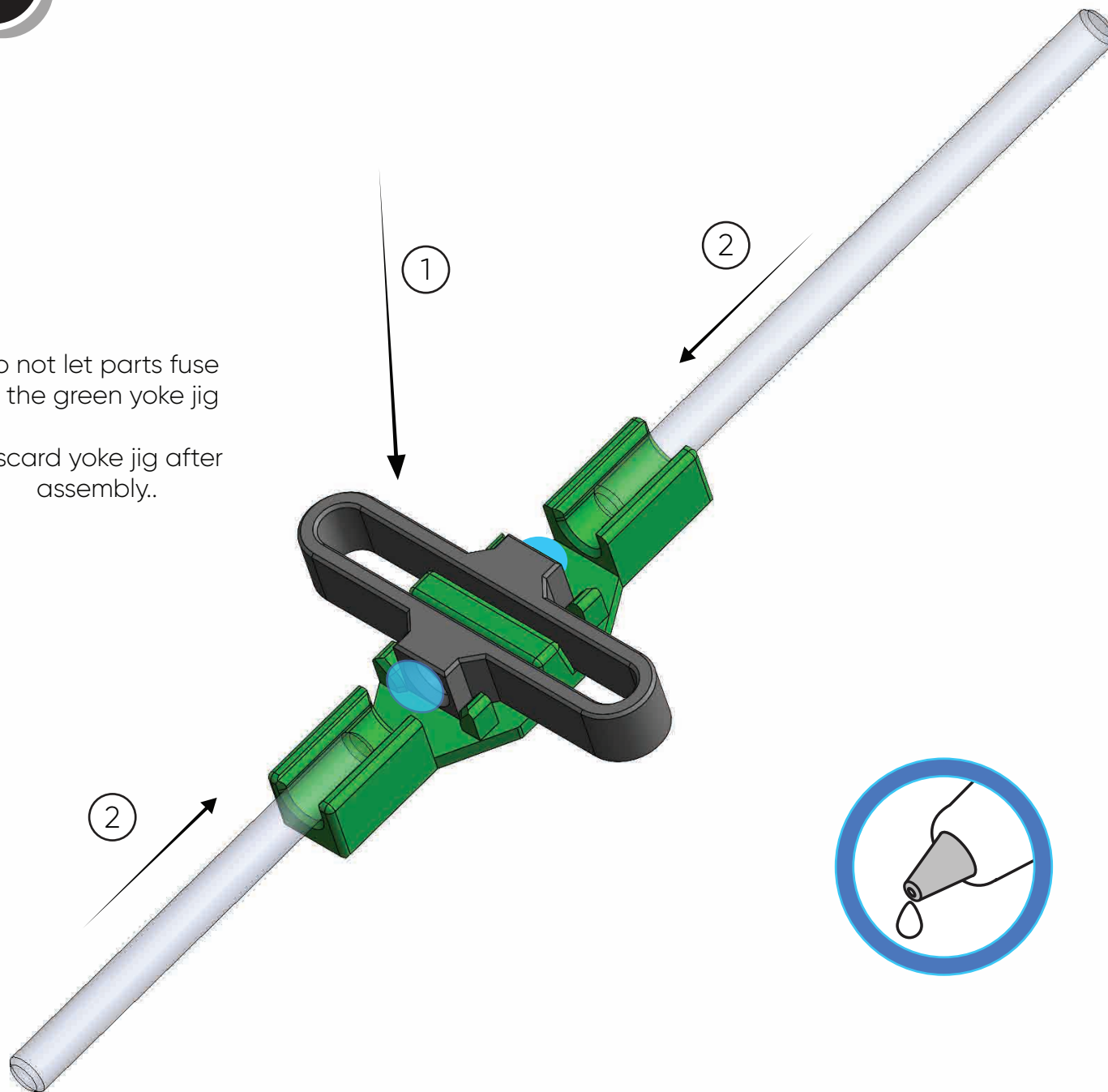


2

Assemble the Yoke

Do not let parts fuse
to the green yoke jig

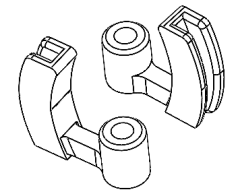
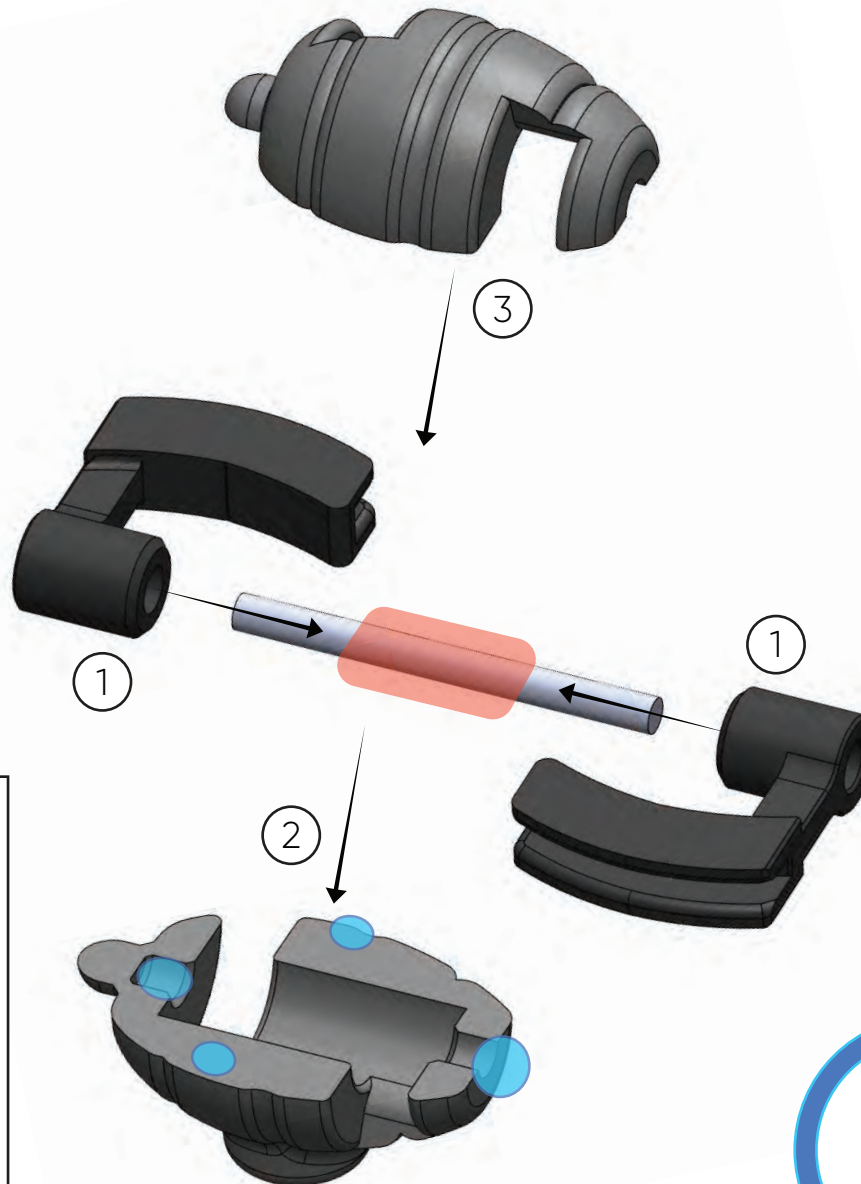
Discard yoke jig after
assembly..



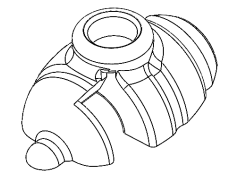
3

Assemble the Hinge Body

Do not let parts fuse within the orange zones



Hinge Barrels



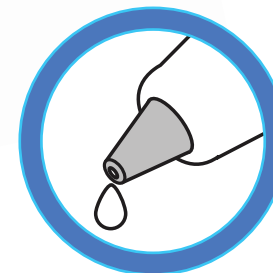
Thorax bottom



Thorax top

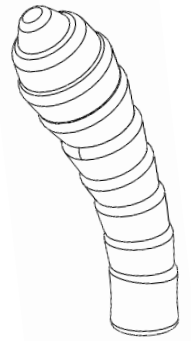
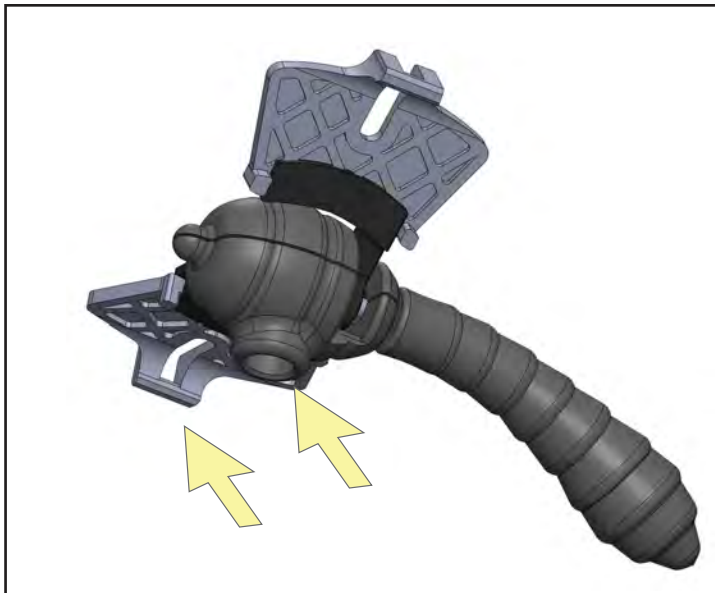
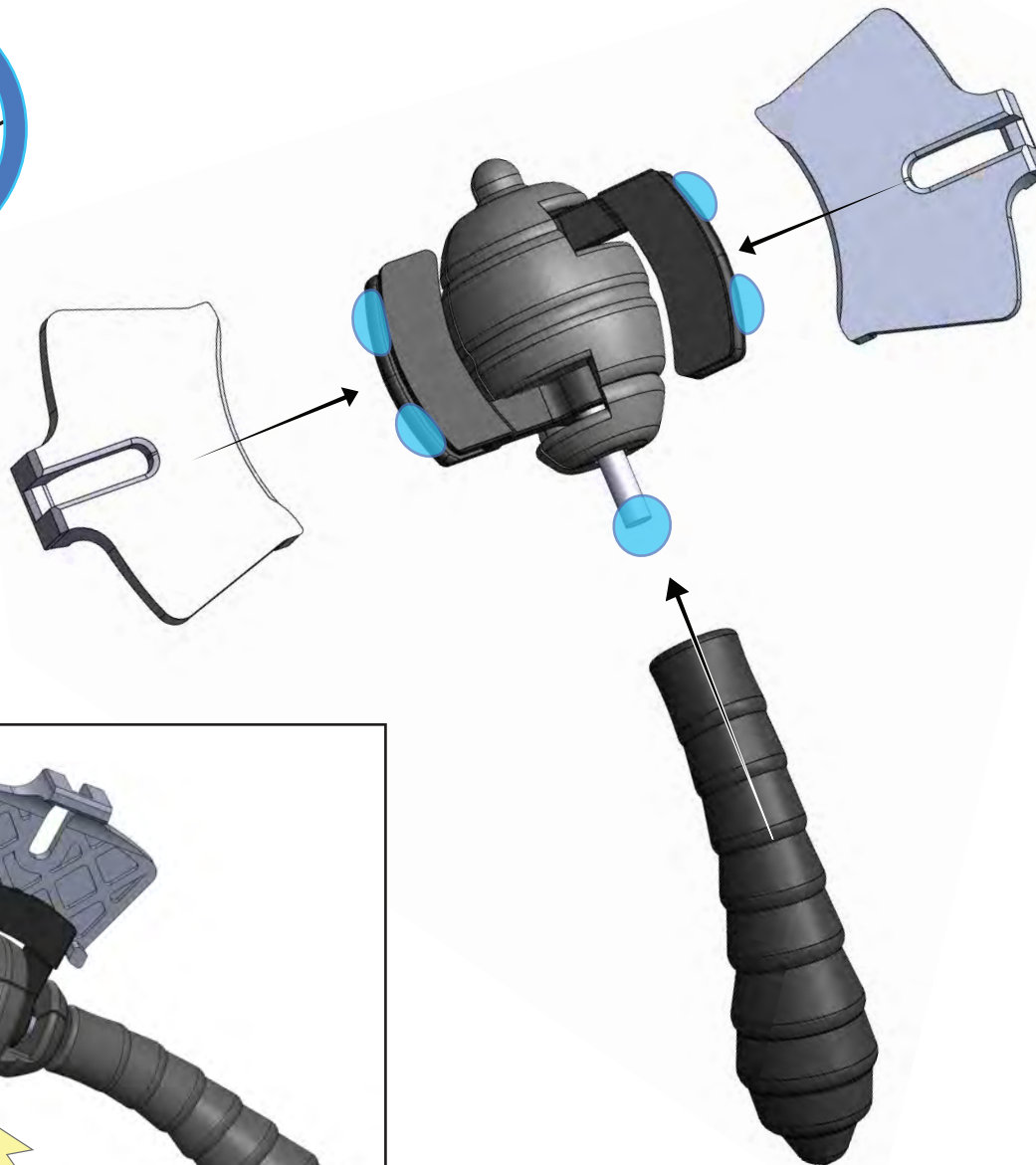
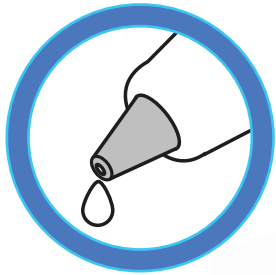


Hinge pin

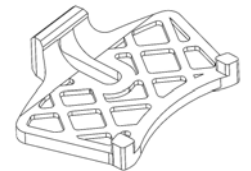
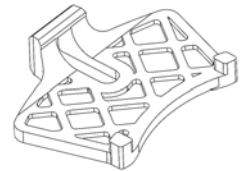


4

Assemble the Body



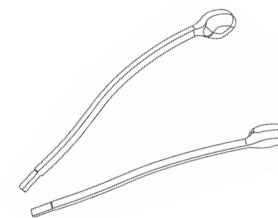
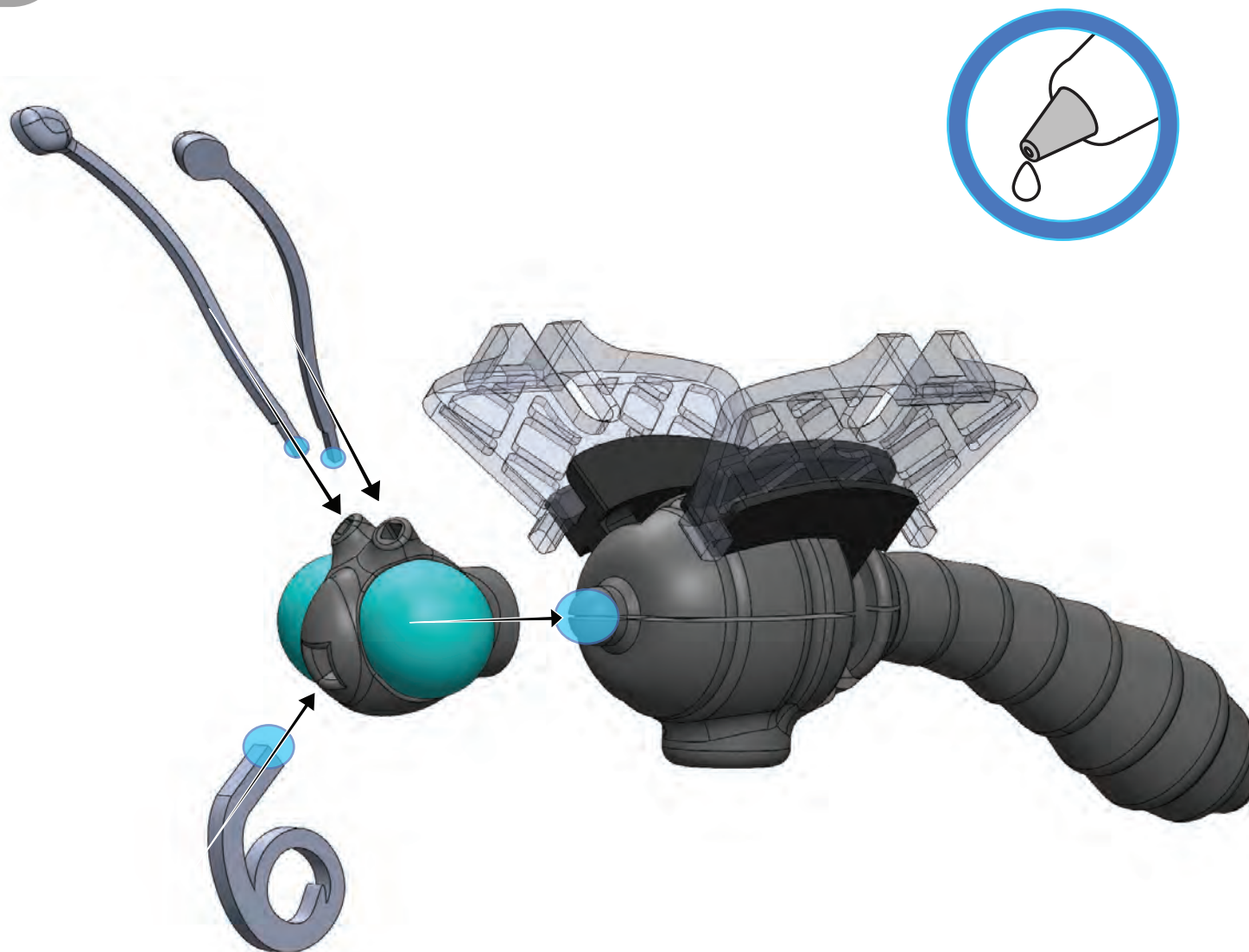
Abdomen



Wing Tabs

5

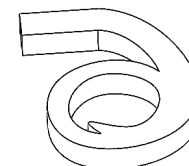
Attach the head



Antennae



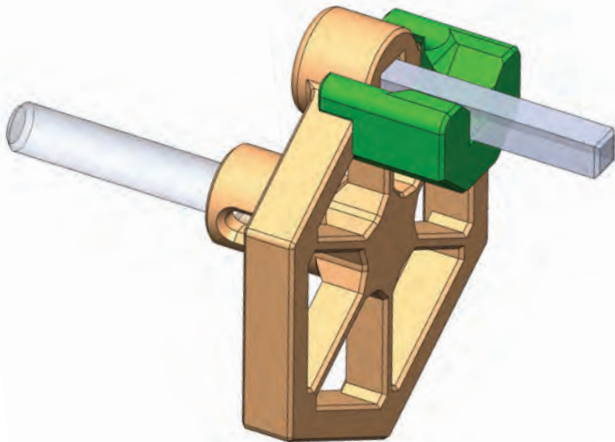
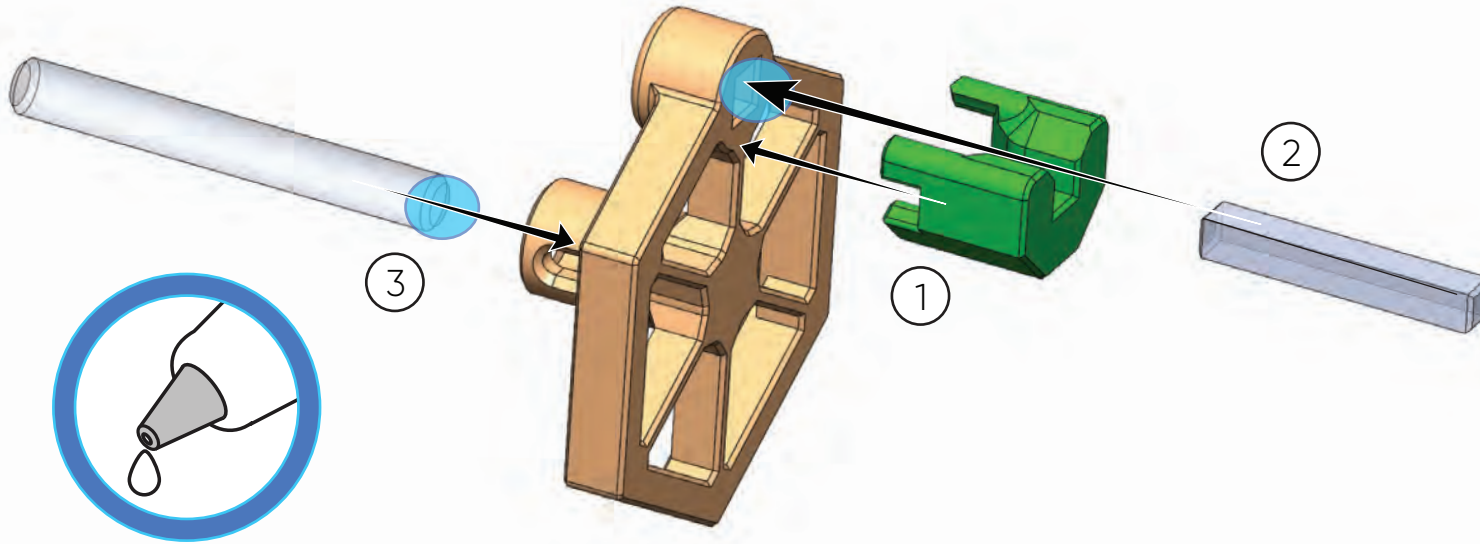
Head



Proboscis

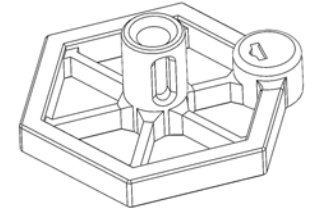
6

Assemble the First Hex Wheel

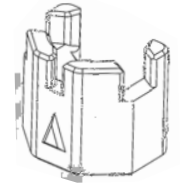


Use the hex jig to
keep the square rod
straight.

Remove and discard
the hex jig
after gluing.



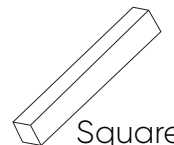
Hex Wheel



Hex Wheel Jig



Hex Wheel Rod

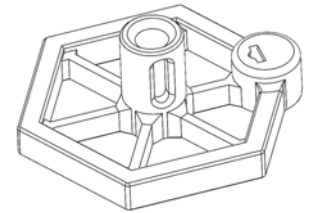
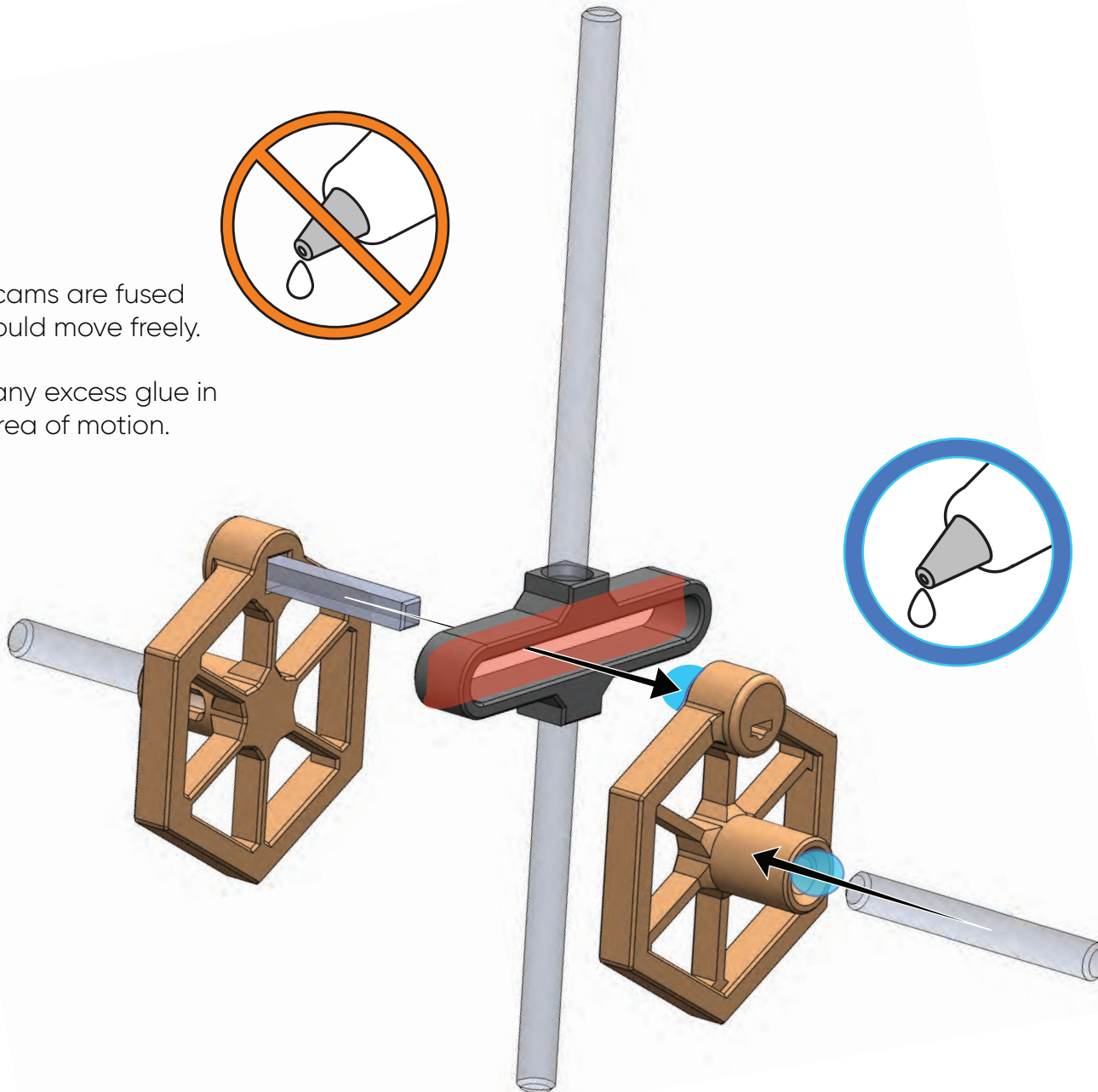


Square rod

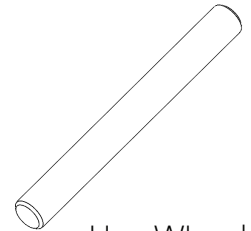
Capture the Yoke

Once cams are fused
yoke should move freely.

Remove any excess glue in
the area of motion.

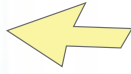


Hex wheel



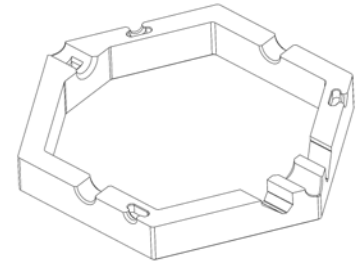
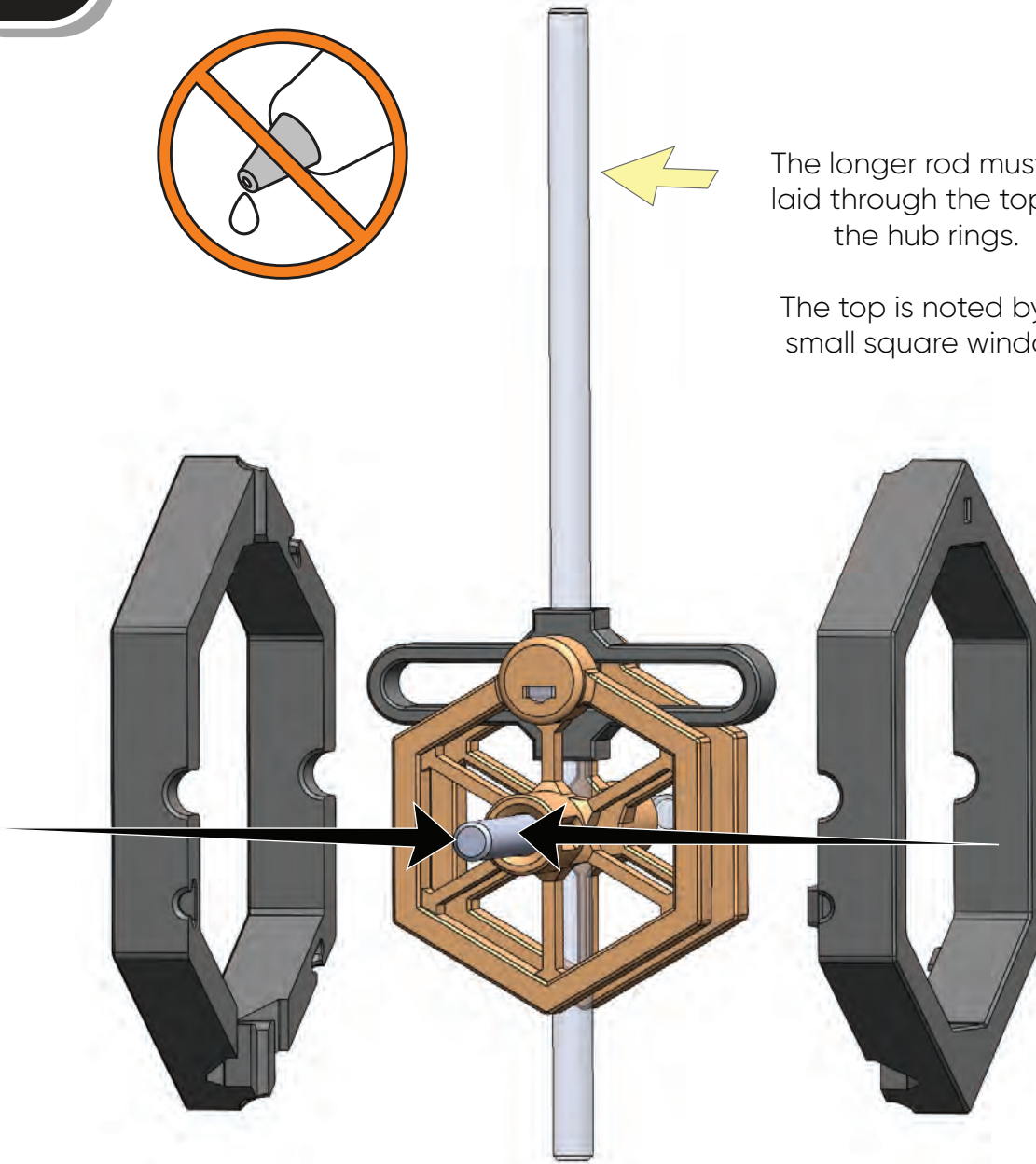
Hex Wheel Rod

Capture the Hex Cam

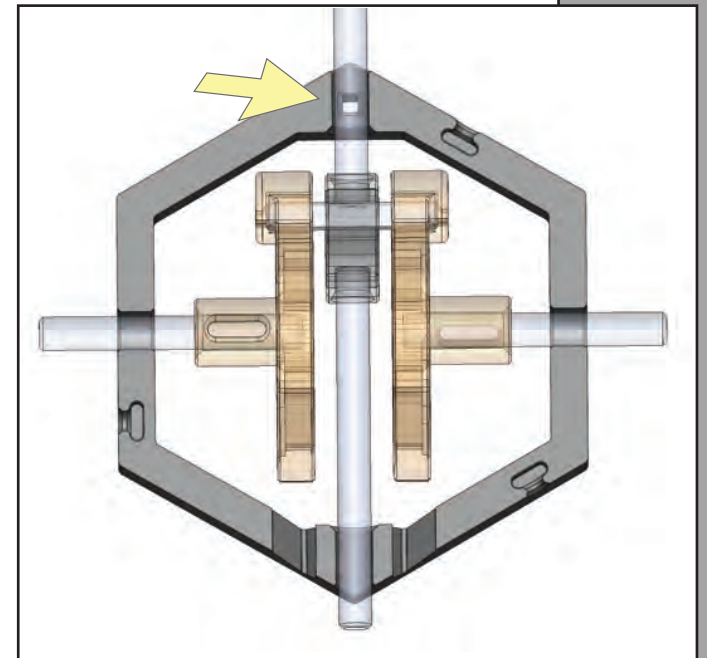
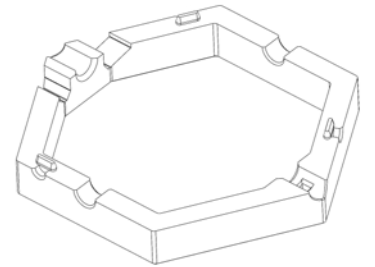


The longer rod must be laid through the top of the hub rings.

The top is noted by a small square window.

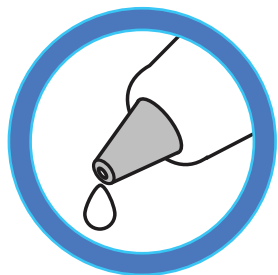


Hub Rings



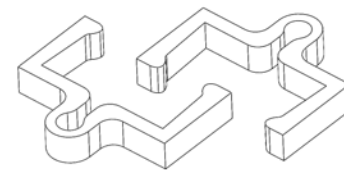
9

Fuse the Hub Rings

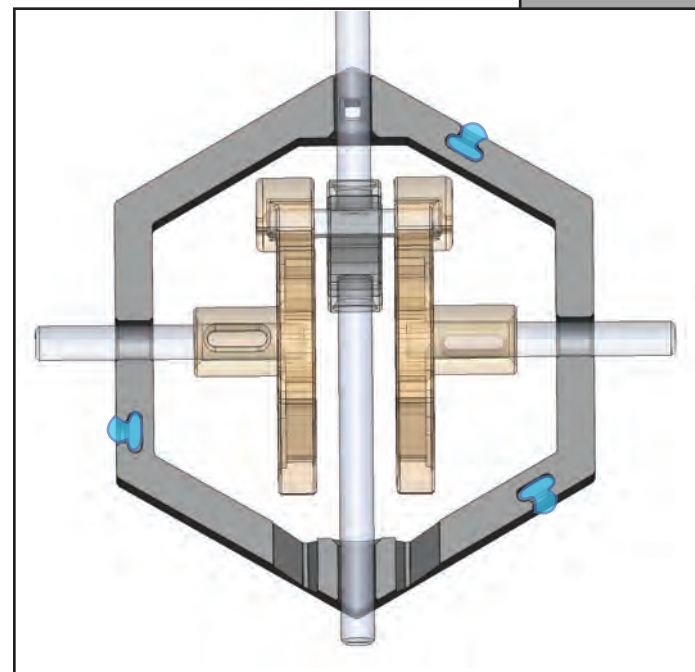
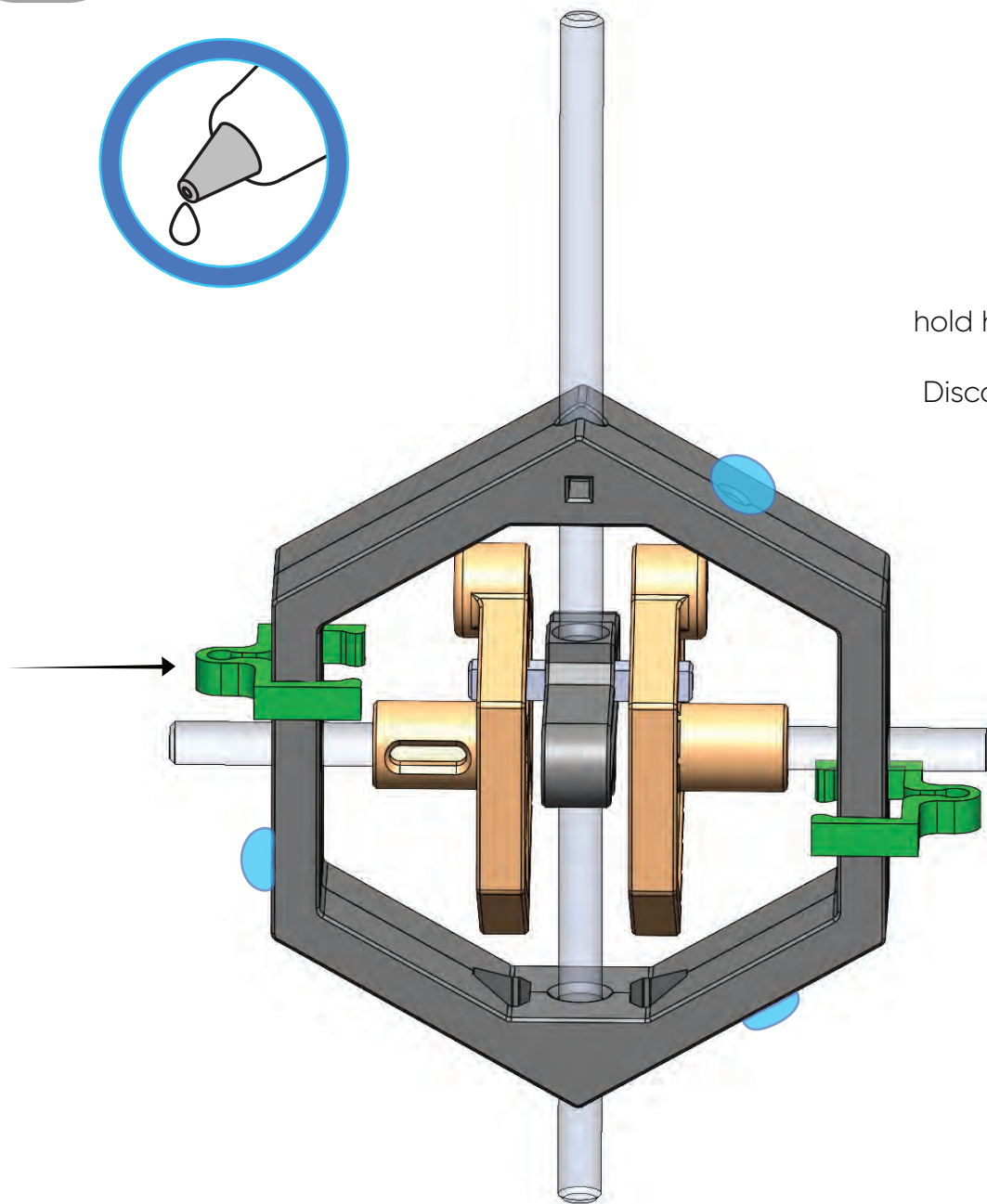


Use hub clamps to hold hub rings together for gluing.

Discard hub clamps after gluing.

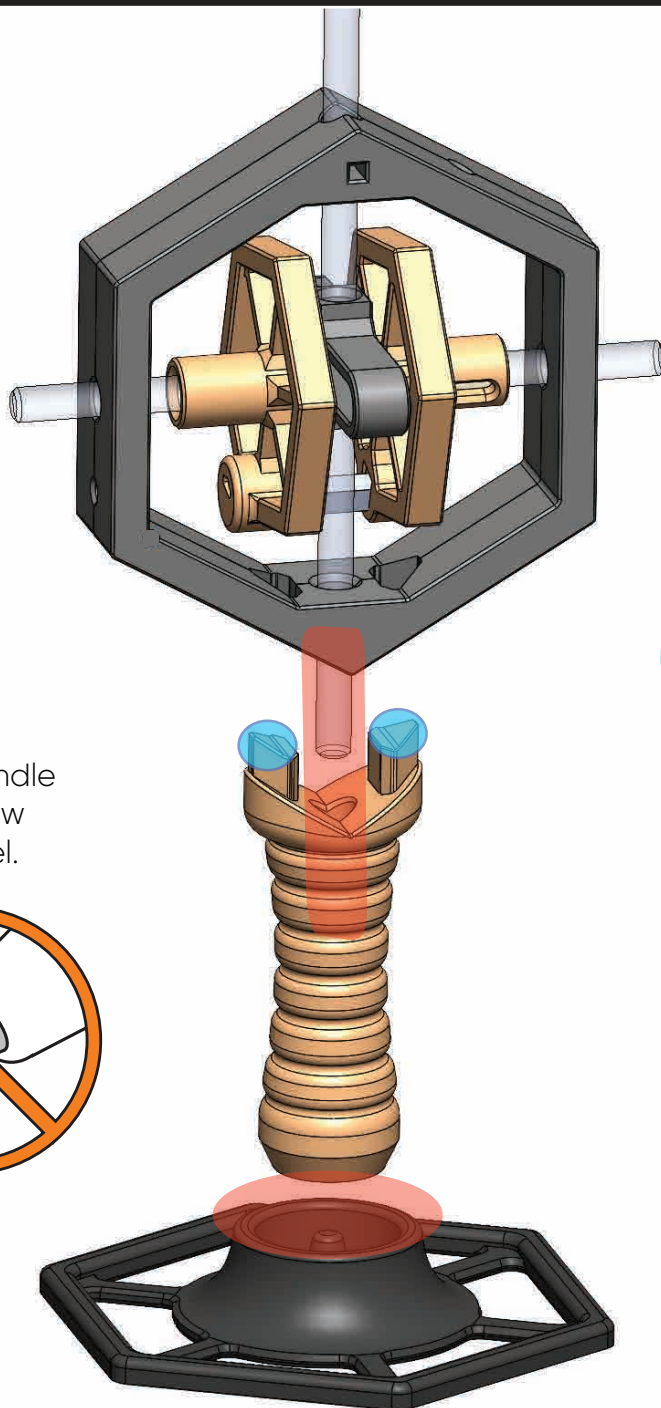


Hub Clamps



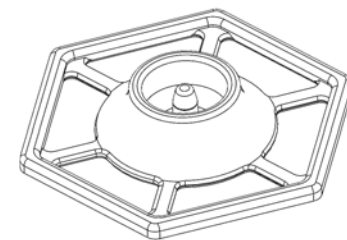
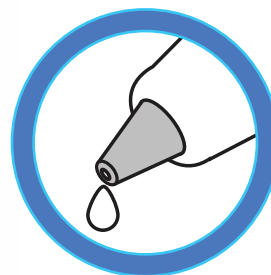
10

Assemble the Base

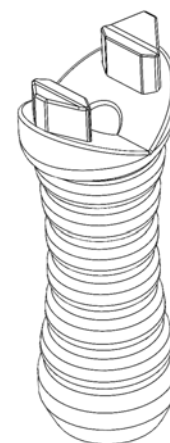


Do not let yoke parts
fuse to base handle or
hub rings.

Keep glue only on base handle
prongs to prevent overflow
into base handle channel.



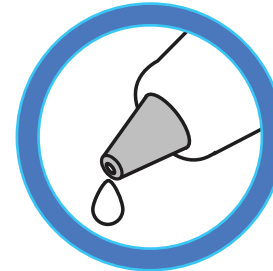
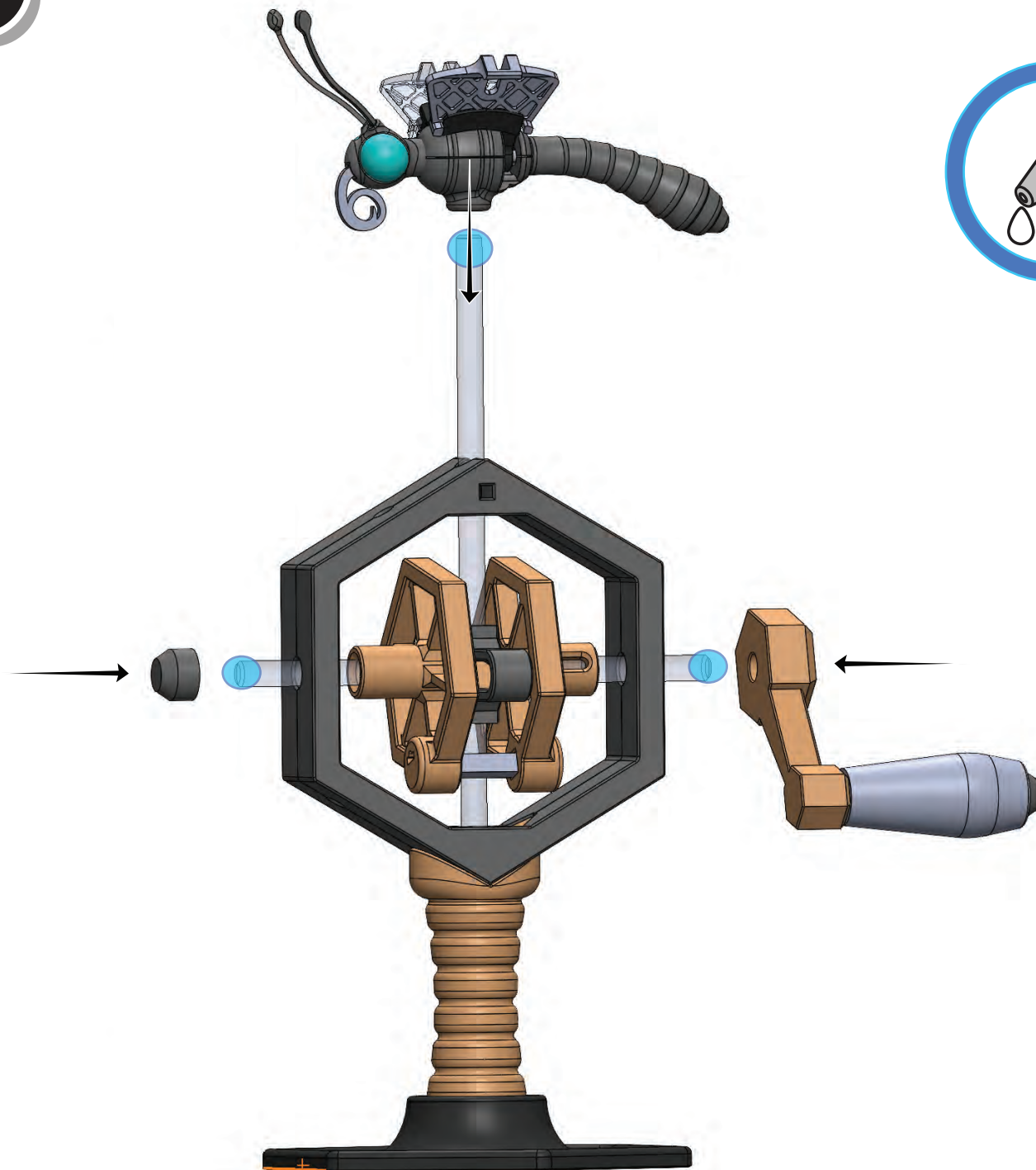
Base



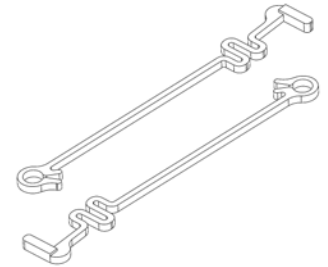
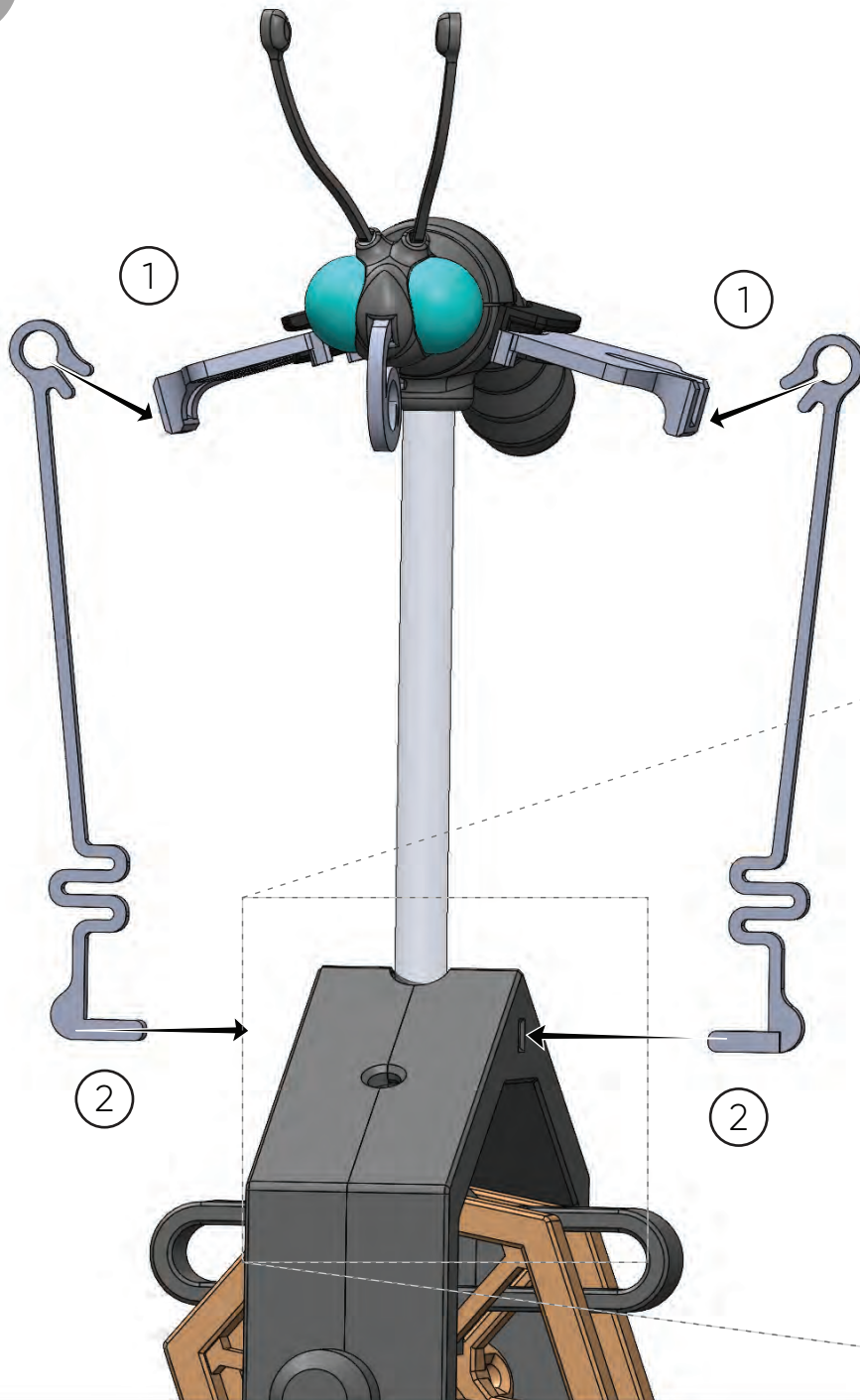
Base Handle

11

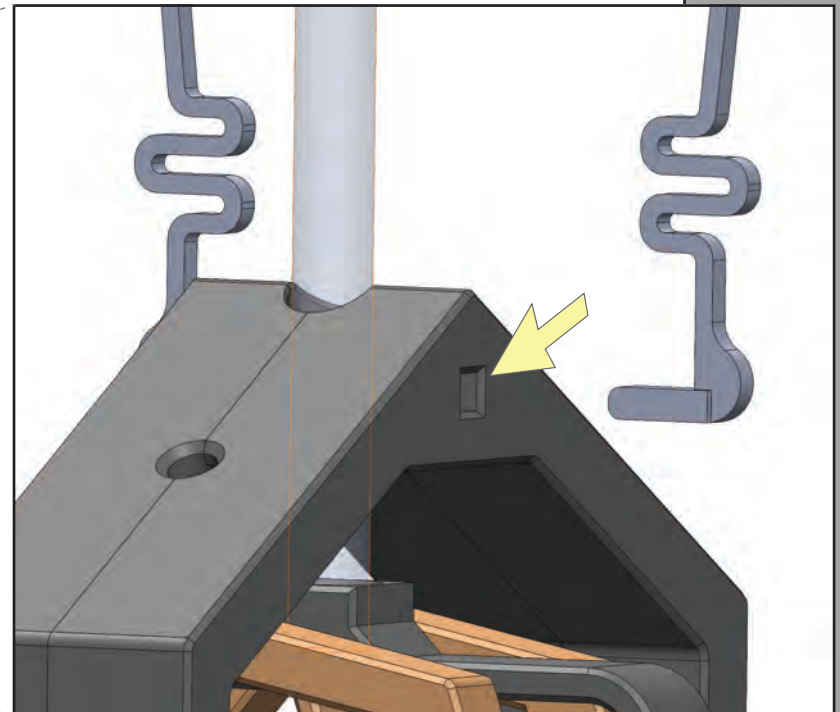
Assemble the Crank and Puppet

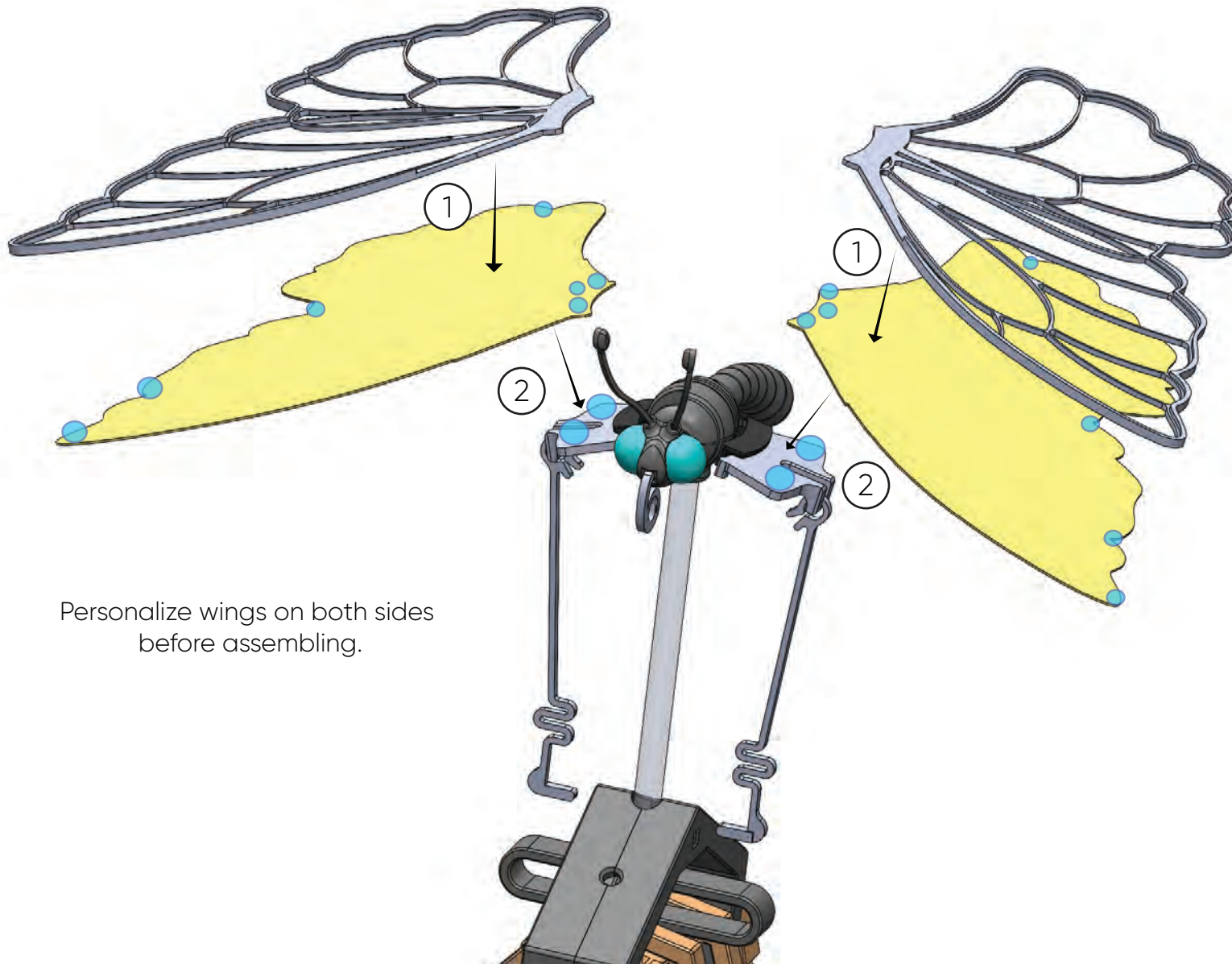



Cam Cap



Wing Springs





Personalize wings on both sides
before assembling.



Wings and
Wing Inserts



